

References May 2015. First productions scheduled first.

1. HUBB®.



HoUse Boat Bottom mark I 2001. Made in watertight reinforced concrete. Wall thickness 20 cm.

Maintenance free, design life 100 years. First production spring 2001. Only concrete floatation for houseboats approved by the maritime authorities in Denmark.

Dimensions 7 x 14 x 2 m, weight approx 96 ts, payload approx 40 ts.

Trademark HUBB® registered by Dirkmarine.

2. HUBB®.



HoUse Boat Bottom mark III 2005. Made in watertight reinforced concrete. Wall thickness 20 cm.

Maintenance free, design life 100 years. Concrete floatation for houseboats approved by the maritime authorities in Denmark.

Dimensions up to approx 30 m x 10 m x 2.5 m, weight approx 150 ts, max payload approx 75 ts.

Trademark HUBB® registered by Dirkmarine.

3. Floating Home "Havmanden" HUBB01



Floating Restaurant delivered spring 2001. Used for floating events, cafe and restaurant.

Equipped with full industrial kitchen, stage, tribune, cafe/restaurant seating for 100 inside and outside.

Main dimensions 7m x 14m.

Total weight approx 150 ts.

Internal commercial area approx 250 m².

Hull concrete Dirkmarine HUBB®.

4. Floating Home "Sonne" HUBB02.



Residential floating home delivered autumn 2002.

Cladding yellow Cedar, windows Pine. Design for family of 5.

Main dimensions 7m x 14m.
Living space net approx 180 m².
Total weight approx 120 ts.

Hull concrete Dirkmarine HUBB®.

5. Floating Home "Sea Living" HUBB03



Residential floating home delivered spring 2003.
Cladding sinus shaped aluminium plating, windows aluminium. Internal design for family of 5. Exclusive production, equipped with techniques and tanks making it independent of location.

Main dimensions 7,6 m x 14,6 m.
Living space approx 150 m².
Total weight approx 150 ts.

Hull concrete Dirkmarine HUBB®.

6. Floating Home "Helsingør" HUBB04

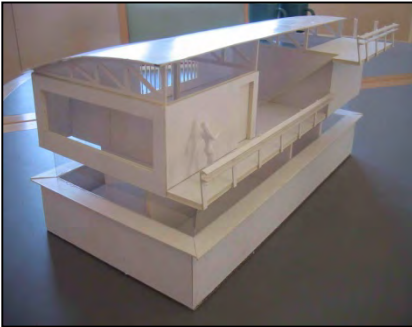


Residential floating home delivered 2003. Cladding fibre boards, Windows mahogany, curved roof. Bamboo floor surfaces. Biodynamic sewage treatment plant Design for family of 5. Later used as clubhouse and food lab for restaurant Noma in Copenhagen.

Main dimensions 7m x 14 m.
Living space approx 140 m².
Total weight approx 130 ts.

Hull concrete Dirkmarine HUBB®.

7. Floating Home "Bølgen" HUBB05.



Residential Floating Home 2004. Internal design for family of 5 persons.

Main dimensions 7,4 m x 14,4 m.
Living space net approx 140 m².
Total weight approx 140 ts.

Hull concrete Dirkmarine HUBB®.

8. Floating Home "Rahbek" HUBB06.



Residential floating home delivered 2004. Design for family of 5 persons. First vessel with heat regeneration system built into the hull

Main dimensions 7 m x 14 m.
Living space approx 200 m².
Total weight approx 180 ts.

Hull concrete Dirkmarine HUBB®.

9. Floating Home "Jonsson" HUBB07.

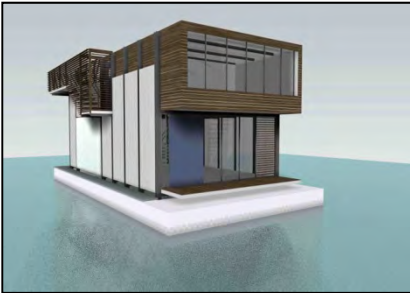


Floating stage, administration and storage area for Floating restaurant "Havmanden".

Main dimensions 7 m x 14 m.
Storage / office space net approx 100 m².
Stage on top approx 100 m²
Total weight approx 110 ts.

Hull concrete Dirkmarine HUBB®.

10. Floating Home "Garravano" HUBB08.



Project 2004. Floating foto studio with built in photo background walls. Can be internally altered for residential living, with high terraces three floors and extraordinary view.

Main dimensions 7,4 m x 14,4 m.
Studio space approx 200 m².
Total weight approx 140 ts.

Hull concrete Dirkmarine HUBB®.

11. Floating Home "Showhome Sjælsø Gruppen" HUBB10.



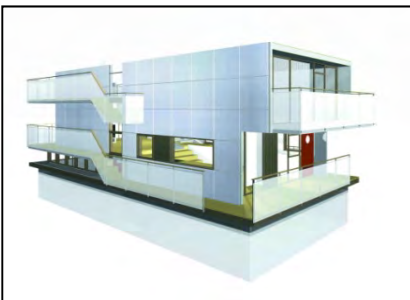
Show home delivered 2004 for Danish real estate developer "Sjælsø Gruppen".

The Floating Home air draft is 11 m above the waterline and it boasts 4 floors and a big roof terrace.

Main dimensions 18 x 8,5 m.
Total weight approx 180 ts
Total Living Space approx 200 m²

Hull concrete Dirkmarine HUBB®.

12. Floating Home "Svanen" HUBB11.



Project. Floating Home for residential / commercial usage.

Living area net approx 200 m² + approx 50 m² basement and approx 75 m² terraces.

Staggered floors, exclusive materials, top terraces and spectacular viewpoints.

Main dimensions 17,5 x 8,5 m.
Total weight approx 170 ts.

Hull concrete Dirkmarine HUBB®.

13. Mini-houseboat "Krusningen".



Mini floating home for residential living, professional usage, vacation, motel type.

Boasts 2 rooms, 44 m² Net living space, 60 m² terraces, kitchen, reception, living room, bathroom, bedroom, + possibly one added room. Cladding / windows mahogany, cedar.

Main dimensions 12 x 4,5 m.
Total weight approx 60 ts.

Hull concrete Dirkmarine HUBB®.

14. Floating Home Malmø1 "ROI".



Floating home for residential living.

Delivered in Malmø, Sweden 2005. Sister Floating Home to "IPG". Floatation constructed of PVC tanks

Boasts 108 m² net living space divided in 2 floors. 50m² terraces, open kitchen, living room, 2 bathrooms with shower and tub, 2 bedrooms, guest bedroom.

Total weight approx 40 ts.

15. Floating Home Malmø2 "IPG"



Floating home for residential / commercial usage.

Delivered in Malmø, Sweden 2005. Sister Floating Home to "ROI". Floatation constructed of PVC tanks

Boasts 108 m² net living space divided in 2 floors. 50m² terraces, open kitchen, living room, 2 bathrooms with shower and tub, 2 bedrooms, guest bedroom.

Total weight approx 40 ts.

16. Floating Home "Sotenäs"



Floating Home for Residential / commercial usage.
Delivered Copenhagen spring 2006.

Boasts 165 m² net living area divided in two floors. 100 m² terraces, roof terrace. Open kitchen, living room / reception, 4 bedrooms, 2 bathrooms with shower and tub. Floor heating, mahogany cladding and windows, folding doors...

Main dimensions 14,5 x 8,5 m.
Total weight approx 140 ts.

Hull concrete Dirkmarine HUBB®.

17. Floating event stage "Havnescenen"



Floating Stage preparing for an event along a quayside in Copenhagen

Installation delivered to Danish real estate financing institute "Nykredit" summer 2005

Designed for Concerts, ballets and events. Accommodation and changing rooms for travelling musicians and artists.



The floating stage ready for a gig along a quayside in Copenhagen.

Storage, dressing rooms and bathrooms downstairs below deck. Equipment elevator. Covered by a roof construction in steel designed as a wave. lattice beams prepared to lift lighting and equipment.

Stage equipped with spectacular lighting effects. To be moved between locations in Copenhagen as a mobile events stage.

Main dimensions 25 x 20 m

Total weight approx 550 ts.

300 m² stage area.

300 m² internal storage and dressing rooms

Hull concrete Dirkmarine HUBB®.

18. Floating Home "Copenhagen"



Floating Home for residential living / commercial usage

Delivered in Copenhagen 2006. 222 m² living area split into in two floors. 150 m² terraces, full roof terrace. Open kitchen, living room, dining room, reception, 6 bedrooms, 3 bathrooms with showers and tubs, one bathroom en-suite with master bedroom and walk-in closet. Under floor heating, mahogany cladding and windows, folding doors.

Main dimensions 17,5 x 8,5 m. Total weight approx 180 ts.



19. Floating Home "Sausalito"



Delivered in Chelsea, UK, November 2010.

120 m² living area and 10 m² terraces. Floating dwelling split into two separate levels. A small 2 bedroom household downstairs, and offices / art studio upstairs.

Main dimensions 15 x 6 m.

Total weight approx 112 ts

Hull concrete Dirkmarine HUBB[®].

Full design, planning permission, construction and project management package by HoW Ltd

20. Floating Home "Victory"



Delivered in Chelsea, UK Jan 2012.

255 m2 living area and 50 m2 terraces. Luxury Floating Dwelling boasts all thinkable features and comfort for inspired and easy living.

Main dimensions 27,5 x 6,25 m.

Total weight approx 131 ts
hull steel Dirkmarine HUBB®.

Full design, planning permission, construction and project management package by HoW Ltd



21. Floating Home "WRQ1"

Wandsworth, UK, 2012.

Main dimensions 20 x 8,4 m.

Total weight approx 185 ts.

Total living space 250 m² + 100 m² terraces.

Hull concrete Dirkmarine HUBB®.

Architecture by Henrik Lambert, Copenhagen. Supervision, structural design and construction by HoW Ltd



22. Floating Home "WRQ2"

Sister vessel to WRQ1. Wandsworth, UK, 2013.

Main dimensions 20 x 8,4 m.

Total weight approx 185 ts.

Total living space 250 m² + 100 m² terraces.

Hull concrete Dirkmarine HUBB®.

Supervision, structural design and construction by HoW Ltd



23. Floating Broadcasting Studio TV2

Made for Danish television broadcaster "TV2" to be used for the European Football Championships 2012. Located in Copenhagen Denmark

Structural design and construction by HoW Ltd.

Vessel total dimensions 17 x 6,2 meters. Total weight 100 ts



Hybrid hull HUBB for Floating Broadcasting Studio. Vessel consisting of two concrete hulls embodying a marine type polystyrene. Connection brackets and buoyancy control of the polystyrene core made in corrosion resistant steel system.



24. Floating Broadcasting Studio TV2

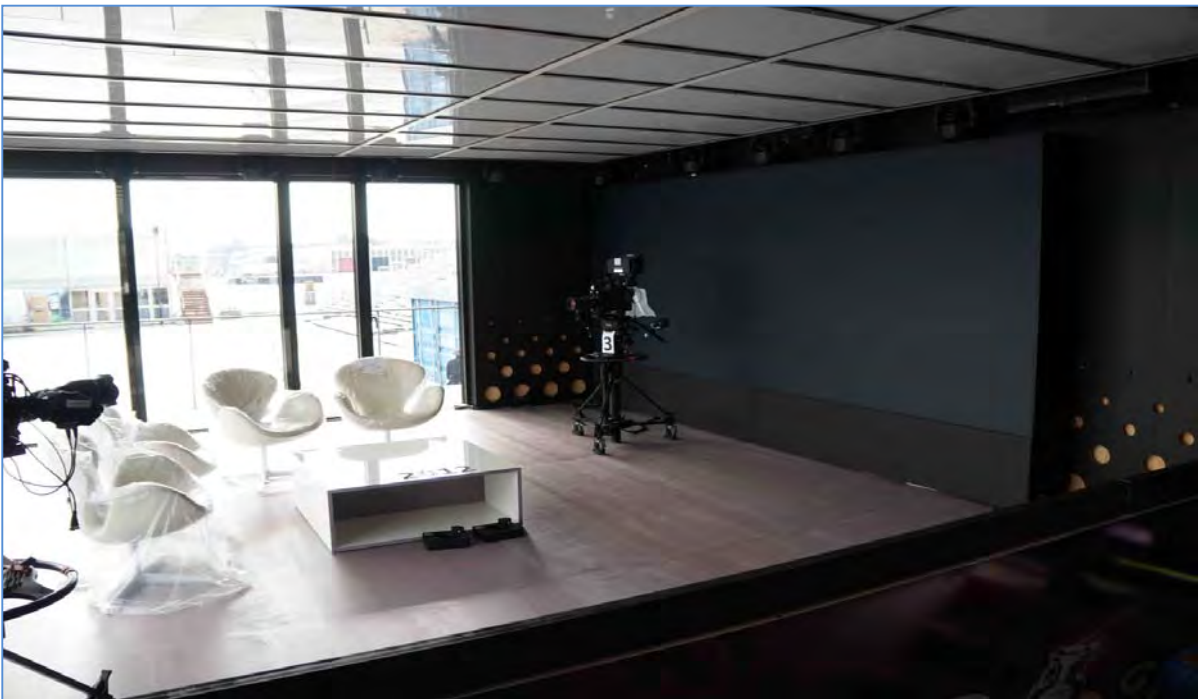
Made for Danish television broadcaster "TV2" to be used for the Olympics 2012. Located in St Katherines Docks, London

Structural design and construction by HoW Ltd.

Hull is a normal type HUBB® Vessel total dimensions 17 x 6,5 meters, total weight 110 ts



TV2 broadcasting studio in St Katherines Docks



Interior floating broadcasting studio

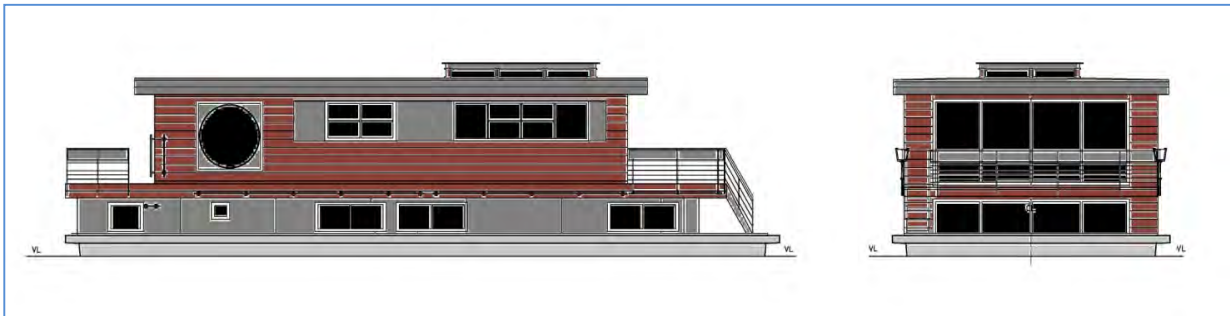
25. Floating Home "BEECH"

Family floating home for Bembridge Harbour 2013

Architecture and structural design by HoW Ltd.

Vessel dimensions 18 x 7 meters. Total weight 155 Ts. Total living space 165 m²

Hull concrete Dirkmarine HUBB®.



26. Floating Harbour Office for Bembridge Harbour

Floating Harbour office and harbour facilities 2014

Architecture and structural design by HoW Ltd.

Vessel dimensions 18 x 7 meters. Total weight 160 Ts. Total commercial space 160 m²

Hull concrete Dirkmarine HUBB®.



27. Floating Marketing Suite for Berkeley Homes

Vessel designed for apartment pre-sale at South Quay, Canary Warf, London 2014

Architecture made by Foster + partners. Structural and hydrostatic design by HoW Ltd.

Main dimensions 42 x 19,3 meters

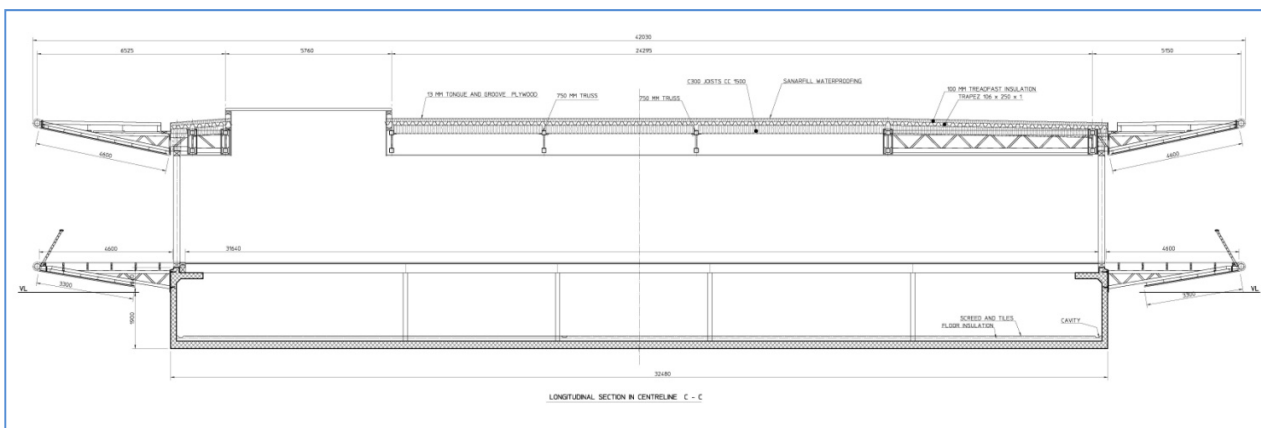
Total weight 800 ts

Total exhibition and office space 600 m²

Hull concrete Dirkmarine HUBB®.



Rendering Berkeley Floating Marketing Suite in Canary Warf



Structural Arrangement for Berkeley Floating Marketing Suite

28. Floating Show Home Quality Living

Floating show home for House on Water Ltd delivered Canary Warf winter 2014. To be used as show home and venue for stakeholder meetings for the UK market.

Spectacular architecture combined with unique features and quality materials. Emphasis on heating re-generation and low emissions. Enhancement of living quality through attention to water and light, and designed living zones. Landscaped roof garden. Covered terraces. Glass railings. Sliding glass walls.

Architecture by Anders Halsteen, Copenhagen. Interior decoration, structural design and construction by HoW Ltd.

Main dimensions 20 x 8,5 meters.

Total weight 200 ts.

Total living space 265 m²

Hull design life 100 years, maintenance free

Superstructure design life 60 years, limited maintenance.

Hull concrete Dirkmarine HUBB®.



QL in Canary Warf

28. Floating Student Accommodation

Ongoing project, Copenhagen. Prototype to be delivered in Copenhagen 2015

Project made to provide student accommodation in educational cities throughout Europe. A concrete hull supporting a community of 12 nos 1 bed apartments. Designed to be independent of traditional surrounding infrastructure. Can be deployed and connected in configurations and shapes which are multiples of three.

Low emissions, passive house certified, heat regeneration, energy efficient, high efficiency structure. Maintenance free.

Architecture by BIG, Copenhagen. Structural design and construction supervision by HoW Ltd

Main dimensions 16,5 x 19 m

Total living space 300 m² distributed in 12 apartments

Total weight approx 560 ts

jda 01062015