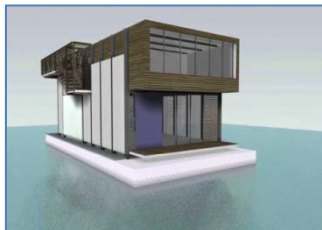
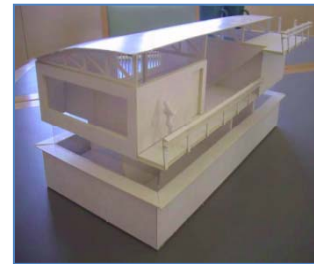
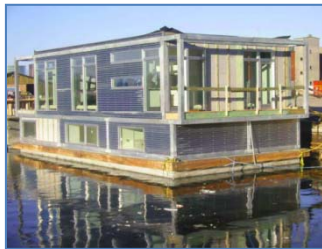


HOUSEONWATERLTD



Presentation September 2015

HOUSEONWATERLTD



Exteriors

HOUSEONWATERLTD



Exteriors

HOUSEONWATERLTD



Interiors

HOUSEONWATERLTD



Concrete HUBB® construction

HOUSEONWATERLTD



Steel hull construction

HOUSEONWATERLTD



General construction

Main resources

- Naval Architecture
- Marine Engineering
- 15 years with Floating Homes (Originated from Dirkmarine, DK)
- Architectural design
- Structural engineering
- Construction and implementation
- Health & Safety
- Energy efficiency and control through design, 0 emissions households
- Services and sewage treatment
- Heat re-generation
- Floating infrastructure
- Piling, mooring, anchoring
- Custom designed steel construction for every purpose.

Dirkmarine HUBB®

- Designed to provide calmness and comfort for the floating dwelling
- Construction approved by the Danish Maritime Authority (DMA)
- Warranted in UK by Building and Land Guarantees (BLG)
- Designed in accordance with the barge rules in Det Norske Veritas (DNV)
- Designed in accordance with current European bridge and tunnel civil engineering rules
- Turn-Key vessels are designed in conformity with construction module D in the CE legislation which is ratified in EU Directive 94/25/EC
- 100 years design life
- Maintenance Free
- No surface treatment
- Collision Resistant
- Ice resistant

Concrete hulls

Superstructures and Energy

- Design biased on comfort zones, view and air, fusing indoor/outdoor.
- Residential living space and commercial working space.
- Structural design in conformity with national building regulations.
- Cladding solutions to a maintenance free life of between 5 and 60 years.
- Materials design simplistic, basic, high quality, fit for purpose.
- Energy efficiency solutions in conformity with Danish “passive house regulations”.
- Insulation design to cost efficient protection against heat loss (winter) and heat ingress (summer).
- Heating solutions specially designed for the waterborne environment.
- Design of M&E systems
- Central control of lighting, electricity, AV, communications.

Infrastructure and mooring systems

- Marina style pontoon systems
- Living area and infrastructure hybrid style connection systems
- Services design, freshwater and sewage treatment.

HOUSEONWATERLTD

Products

- Multiproduction of concrete hulls registered trademark HUBB®
- Multiproduction of steel hulls
- Design and production of floating homes and houseboats
- Design and production of floating infrastructure, services and mooring arrangements
- Production of hulls and superstructures in DK since 2000
- Production of hulls and superstructures in UK since 2010
- Special emphasis on high design affordable housing and student accomodation

Current clients and contract pipeline

- Student accomodation, Urban Rigger Copenhagen, Architect BIG
- Affordable housing development and architecture, Igloo
- Paddington Basin offices, European Land, Architect Llaird, Bloc/H2O
- Residential Floating Home "Griffin", Kew Bridge, London

Commitments

HOUSEONWATERLTD

Achievements Dirkmarine and House on Water Ltd

- 30 Projects made to date
- Faultless concrete hull track record
- Verified by Danish Maritime Authority (DMA)
- Product warranty in UK by Building LifePlans Ltd (BLP)
- Design according to Det Norske Veritas (DNV)
- Construction in Denmark, Sweden, Abu Dhabi, England
- HUBB ® registered trademark and design model protection

Special emphasis on

- Affordable Housing
- Student accomodation
- Community creation



Achievements

Who we are

- Jesper Dirk Andersen, Naval Architect BSc, Director, owner
- Willem Baars, Solicitor, Director
- Susanne Nemeth, PR/communication MSc
- Tony Best, board member
- David Ovenden, board member

House on Water Ltd
22 Gilbert Street
London W1K 5HD
VAT no. 155 6145 10

T UK: 0044 750 301 5753
T DK: 0045 3096 1662

W: www.dirkmarine.com
E: jda@dirkmarine.dk